

WAAS CH <b>50511</b> <b>W28A</b>	APP CRS <b>276°</b>	Rwy Idg TDZE Apt Elev	<b>6000</b> <b>975</b> <b>975</b>
--	------------------------	-----------------------------	---

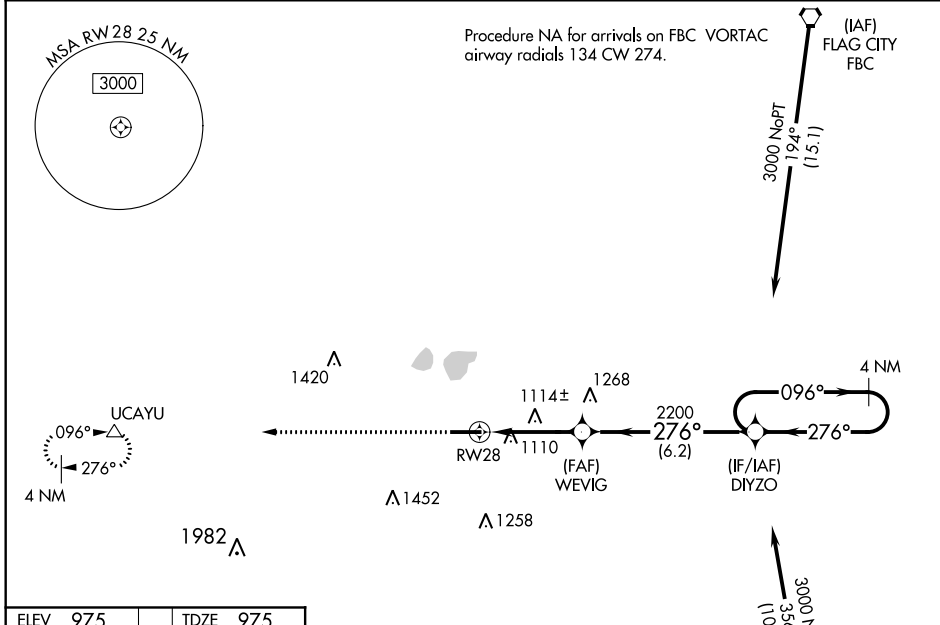
# RNAV (GPS) RWY 28

LIMA ALLEN COUNTY (AOH)

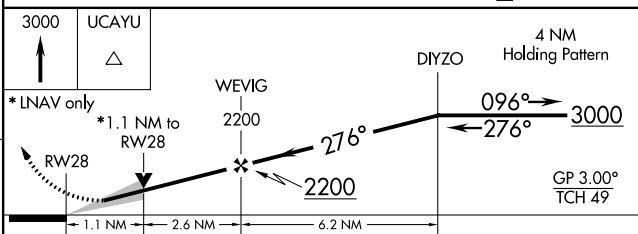
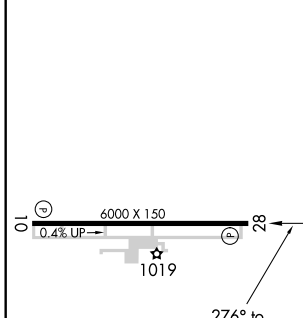
**⚠** Baro-VNAV NA when using Findlay altimeter setting. For uncompensated Baro-VNAV systems, LNAV/VNAV NA below -16°C (4°F) or above 37°C (98°F). When local altimeter setting not received, use Findlay altimeter setting and increase LPV DA to 1255, LNAV/VNAV DA to 1477 and all MDAs 80 feet; increase LPV all Cats visibility 1/8 SM, LNAV/VNAV all Cats, LNAV Cats C/D and Circling Cats C/D 1/4 SM. DME/DME RNP-0.3 NA. VDP NA with Findlay altimeter setting.

**MISSED APPROACH:**  
Climb to 3000 direct UCAYU and hold.

ASOS <b>128.725</b>	COLUMBUS APP CON <b>118.425 323.15</b>	UNICOM <b>122.7 (CTAF) 0</b>
------------------------	---	---------------------------------



ELEV 975	TDZE 975
----------	----------



CATEGORY	A	B	C	D
LPV DA		1175-3/4	200 (200-3/4)	
LNAV/VNAV DA		1397-1 3/8	422 (500-1 3/8)	
LNAV MDA	1380-1	405 (500-1)	1380-1 1/8	405 (500-1 1/8)
CIRCLING	1420-1 445 (500-1)	1440-1 465 (500-1)	1540-1 1/2 565 (600-1 1/2)	1820-2 3/4 845 (900-2 3/4)

EC-2, 14 JUL 2022 to 11 AUG 2022

EC-2, 14 JUL 2022 to 11 AUG 2022